

COMMUNITY PROVIDER NETWORK OF RHODE ISLAND



Annual Report

2022 Overview.....	Page 2
Our Impact & Partners.....	Page 3
Executive Director Overview.....	Page 4
A Growing Social Impact.....	Page 5
Advocacy & Education.....	Page 6
Impactful Programs.....	Page 7
Strategic Plan.....	Page 8
Leadership & Sponsors.....	Page 9
Closing.....	Page 10



www.cpnri.org

ABOUT CPNRI

The Community Provider Network of Rhode Island advances the rights of people with disabilities and those that support them. We are the nonprofit trade organization for disability service providers in RI. We represent **33 providers** who support **20,000 people** and **5,000+ workers**.

Together, we have created real change for **38 years**.

FIGHTING FOR INCLUSION



Programs that impact
people's lives



Advocacy



Trainings
for Staff



Impactful Events
& Conferences



Unified
Communications



Networking for
Providers



IT IS OUR VISION THAT PEOPLE WITH DISABILITIES BELONG IN OUR COMMUNITIES

20,000+ PEOPLE SUPPORTED

WE ARE CPNRI



AccessPoint RI



Living Innovations



The Autism Project



Action Based Enterprises (ABE)



Looking Upwards



The Fogarty Center



Arc of Blackstone Valley



Meaningful Outcomes



The Olean Center



Avatar



Meeting Street



West Bay RI



Children's Friend



Momentum, Inc.



Whitmarsh House



C.O.V.E. Center



Northeast Family Services



Community Residences, Inc.



Ocean State Behavioral



Corliss Institute



Opportunities Unlimited



Family Behavior Solutions



Perspectives Corporation



Family Service of RI



proABILITY / The Arc of Bristol



J. Arthur Trudeau Memorial Center



Project Friends



James L. Maher Center



ReFocus, Inc.



Justice Resource Institute



Seven Hills RI



L.I.F.E. Inc.



spurwink | RI



A NOTE FROM OUR EXECUTIVE DIRECTOR



Tina Spears
Executive Director, CPNRI

A YEAR OF MEANINGFUL CHANGE

Dear Reader,

When I think about 2022, I think of growth, achievement, and unwavering dedication towards realizing our vision that people with disabilities belong in our communities. CPNRI has truly been on the move, and together, we have laid the foundation for a future that's brighter and more inclusive than ever before.

We had the privilege of serving an ever-growing number of community members, ensuring that they are equipped with the tools they need to contribute meaningfully to society. Our collective efforts have yielded incredible results that will change lives.

We saw this put into action when, together, we made change at the State House that some told us would not be possible (see page 6). Through our dedicated work, we've not only supported employees but made significant strides in advocating alongside people with disabilities, making the ideals of inclusion and belonging an integral part of our community's fabric.

As I reflect on my four years as Executive Director, I am filled with an overwhelming sense of pride. The strides we've made, the lives we've touched, and the incredible team at CPNRI inspire me every day. The synergy between our members, the dedication of our team, and the resilience of the communities we serve make every challenge we've faced worth overcoming.

The future beckons with promise and potential. Our journey has only just begun, and there's so much more to accomplish. As we look forward to 2023, let us carry the spirit of innovation, collaboration, and inclusion that defines CPNRI.

CPNRI is not just an organization; it's a community united by a shared vision. We are the embodiment of determination, the catalysts for change, and the champions of inclusion. We hope you join us.


With gratitude for your steadfast support and unwavering commitment,

A handwritten signature in black ink that reads "Tina Spears".

Tina Spears
Executive Director
info@cpnri.org


GROWING OUR IMPACT



Community Provider Network of RI 
@CPNRI

Social media's impact on our culture is growing every year. In 2022, CPNRI focused on changing culture. We posted on six different social media platforms with three goals: 1) Increase anti-ableism conversation 2) Advocate with people with disabilities 3) Help more people discover our work.



Community Provider Network of RI 
@CPNRI

Together, we built a community. We reached a younger audience than we ever have before. If that audience grows up knowing, and believing, that people with disabilities belong in our communities, its impact will last generations. In 2022, we played our part in long-term change.



⬆️ 73%

2,101

Followers



⬆️ 459%

367,799

Amount of times
our posts were seen



⬆️ 73%

43,573

Likes, comments,
and shares

(⬆️ Percentage increase compared to 2021)

STORY OF THE YEAR

CPNRI



December 9, 2022

 181,442

 25,373

 142

 444

In 2022, this story about Marvin stole the show. Produced, filmed and edited by CPNRI, Marvin's story of finding a job at **Grey Sail Brewing** was told. Marvin's positive attitude, and his employer's decision to include, was watched by more than **181,000 people Worldwide**.

This was one of more than a dozen videos produced in-house by CPNRI in partnership with our member organizations. These productions made CPNRI one of the first trade organizations to fully embrace social media and the impact it can have.

ADVOCACY WORKS

CPNRI LEADS PASSAGE OF HISTORIC CHANGE FOR PEOPLE WITH DISABILITIES



RATE REFORM

- ✓ After years of a lack of investments, CPNRI and its community partners, passed historic rate reform.
- ✓ Rate reform will impact providers, frontline staff and people supported for years to come.
- ✓ It will ensure those who provide services are compensated appropriately.

OUR YEAR AT THE STATE HOUSE

- ✓ Advocacy trainings
- ✓ Bi-Partisan support
- ✓ Long-term investments
- ✓ Hundreds of advocates
- ✓ Impactful community partners
- ✓ Relationships built with lawmakers



READY FOR 2023

NEW PARTNERSHIP, REAL CHANGE

2022 - 2025 GRANT



**COMMUNITY
PROVIDER NETWORK**
OF RHODE ISLAND



Department of Labor and Training
RHODE ISLAND



GOAL #1

Increase Disability
Employment

GOAL #2

Attract & Retain
Workforce

PARTNERS



Apprenticeship
RHODE ISLAND



COMMUNITY
COLLEGE
OF RHODE ISLAND



UNIVERSITY OF MINNESOTA

2022

- ☒ 100+ people with disabilities received employment training
- ☒ 66 workers received hands-on training

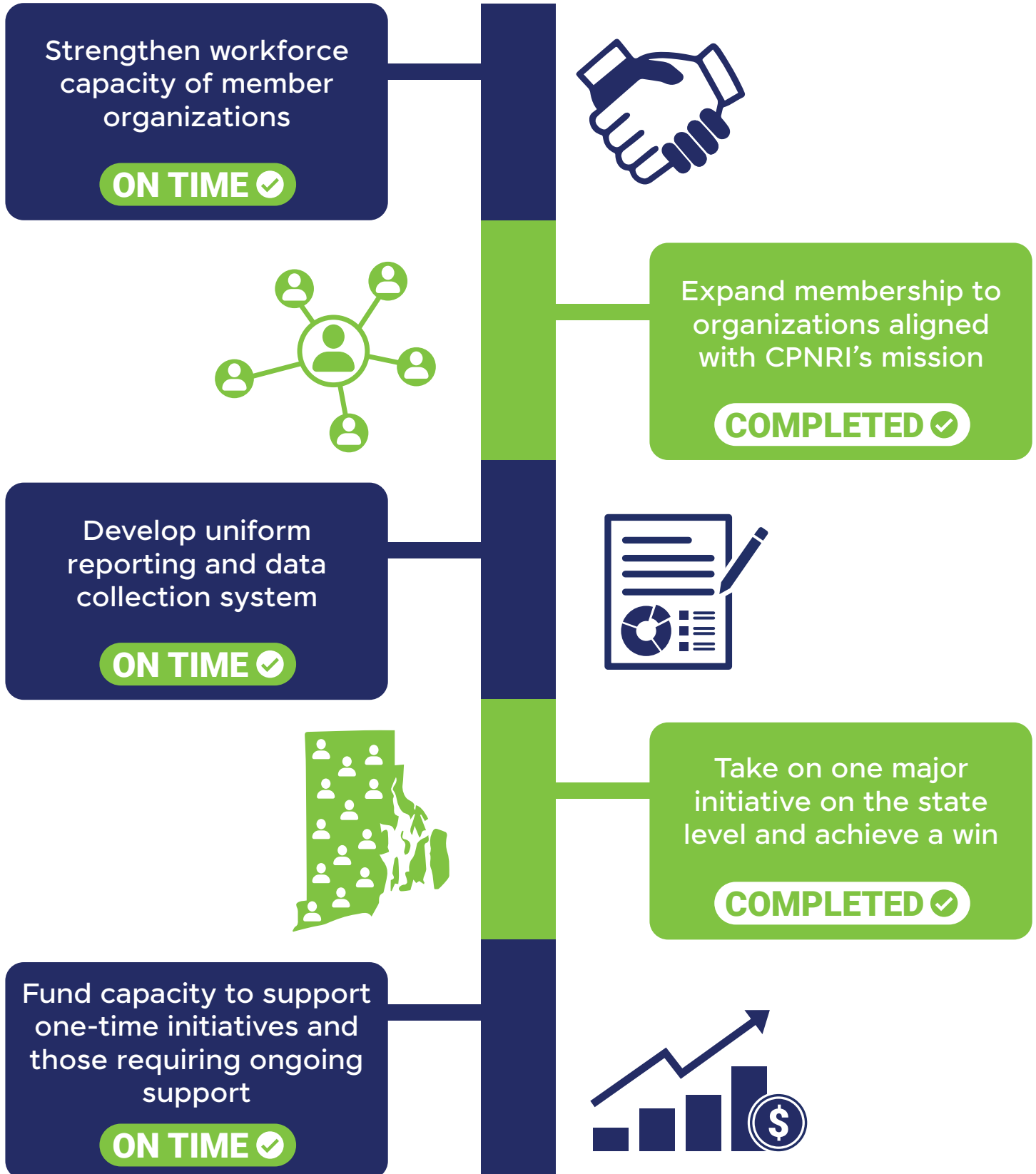
2023

- ☐ Holding multiple, large professional development conferences
- ☐ Continue to increase employment opportunities for people with disabilities

IMPROVING THE LIVES OF PEOPLE WITH DISABILITIES

STRATEGIC VISION

2022 - 2025



OUR TEAM



Tina Spears
Executive Director



Jenna Husted
Director of Programs



Nick Friend
Director of Communications



Carissa Groccia
Project Manager



Doreen McConaghy
Pooled Trust Coordinator

SUPPORTING INCLUSION

Thank you to our dedicated sponsors:



OUR DISABILITY ALLIES

Thomas Armstrong
Michael Beauregard
Liana Cassar
Paul Cooney

Paige DiBiasio
Sage Dobransky
Kathleen Ellis
Casey Gartland

Samuel Howard
Anne Landis
Michael Niemeyer

Ann Telfer
Susan Willemse

CHANGING LIVES SINCE 1985



✉ info@cpnri.org

1130 Ten Rod Road, Suite F101
North Kingstown, RI 

Donate:
cpnri.org



@CPNRI